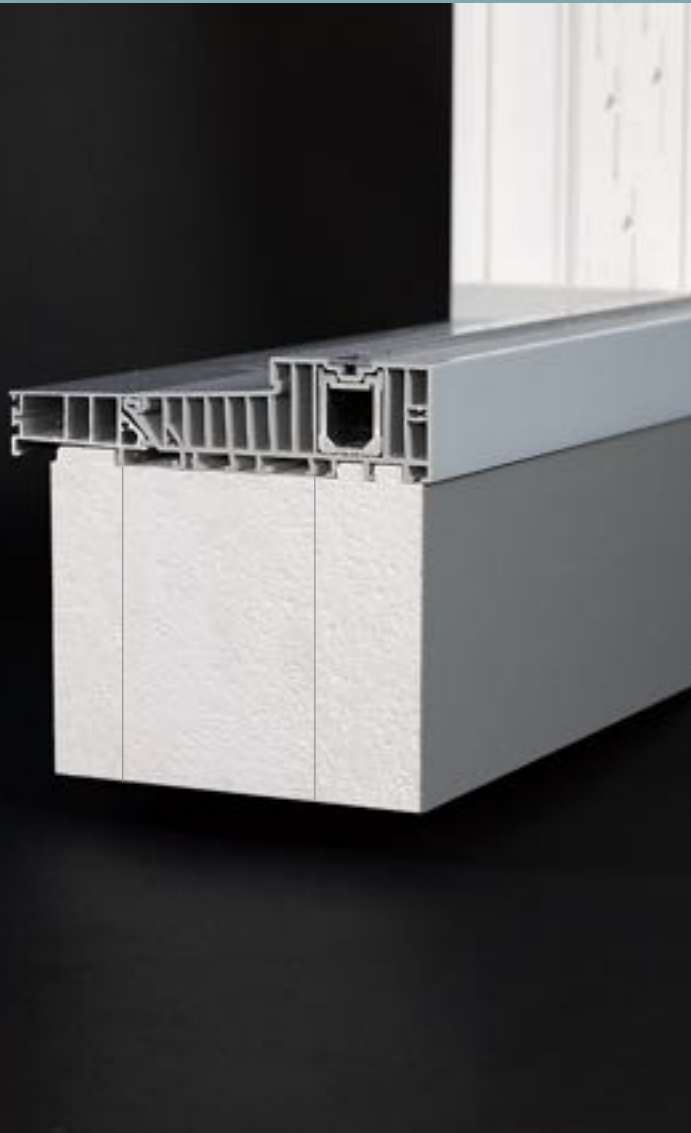


LIFT & SLIDE SUBSTRUCTURE

ECONOMICAL AND STURDY.



The Lift & slide support packer is a combination of two external structural support layers with a light, non-structural, insulating core. This combination reduces the overall weight of the packer, provides excellent thermal performance and the clever combination provides a cost saving. The two external structural sections provide adequate support for the lift and slide door system and also allow the packer to be easily and securely fixed to the building substrate and the threshold profiles.

SPECIFICATIONS:

- Supplied in standard lengths of 2350mm and in any length, to order, up to a maximum of 6000mm.
- Can be supplied in any height, to order, up to a maximum of 400mm.
- Can also be produced as a stacking packer variant which can be glued and screwed together on to achieve the required dimension.
- Plates 2350x1160x40-220mm [L, W, thickness]

The surface can also be capped with a white or grey PVC-U external face.

Profiles are supplied with a purpose made contoured top face which fits the underside of the threshold profile. Any profile system can be accommodated. Standard production details for Siegenia, Aluplast, Profine and Maco to name a few. Other systems available on request

SEALING DETAIL:

The external face must be sealed with a suitable sealing system. See our data sheet for approved liquid waterproofing suppliers and products. Torch-on or heat gun applied bitumen sealing membranes can be used in accordance with the directions and recommendations on the sealing detail application sheet

TESTED ACCORDING TO ETB

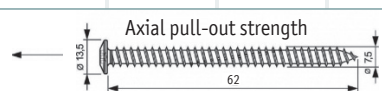

TIMBER FREE MATERIAL

WILL NOT ROT

RESISTANT TO MOISTURE AND THE EFFECTS OF FREEZE THAW

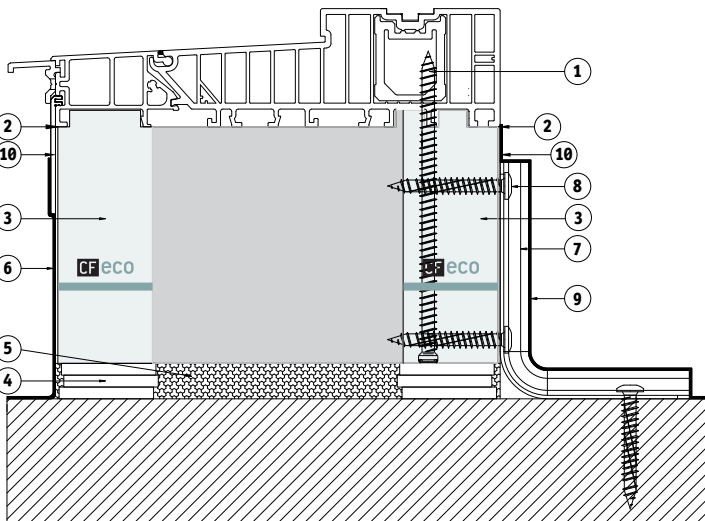
EXCELLENT INSULATION PROPERTIES

Sandwich core 2 base layer **CF**eco

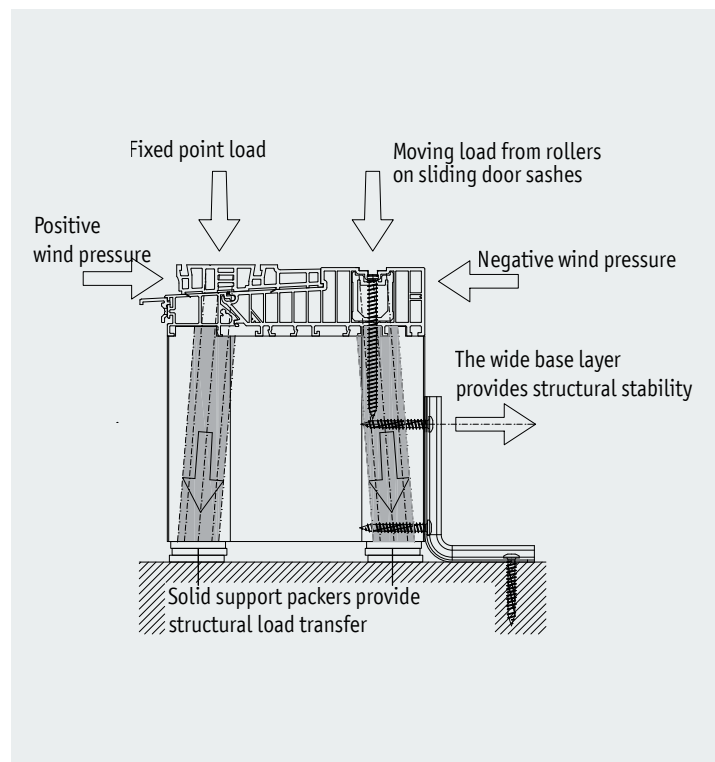
Thicknesses	140 mm	150 mm	160 mm	170 mm	180 mm	190 mm	200 mm	210 mm	220 mm	230 mm	240 mm
U-Value (W/m²K)	0,29	0,27	0,25	0,24	0,22	0,21	0,20	0,19	0,18	0,17	0,16
Screw-pull out resistance	825 N					 <p>Packers must be placed under each side of the structural profile to ensure adequate support. Maximum 500mm centres between packers.</p>					
Packing Shims in mm	60x40	53x66	53x140	53x170	53x210						
max. glass panel load in kg	567,60	624,40	1324,40	1608,00	1986,40						
Fire class DIN 4102-1 / EN 13501-1	B1/E										

Installation variant with highly insulating substructure insulation profiles suitable for all lift-and-slide door thresholds.

- 1 Window frame screw 7.5mm – Pre-drilling is not required in the substructure profile. Spacings and fixing lengths are determined by the structural performance requirements.
- 2 Joints are bonded with MS polymer adhesive or adhesive tape
- 3 40mm CFeco provides excellent structural support
- 4 Packing shims
- 5 The gap between the packers must be filled with insulating foam or cementitious grout depending on the thermal detail of the installation
- 6 The external face must be sealed in accordance with the data sheet using a liquid plastic or bitumen membrane (refer to approved supplier list)
- 7 Mounting brackets fixed in accordance with structural requirements
- 8 Window frame fixing screws 7.5mm flat head
- 9 Sealing inside must be in accordance with the building design criteria
- 10 PVC-U to the visible face (Option)



- > The two solid layers situated on the inside and outside of the threshold support material transfer the heavy moving loads of lift-and-slide doors into the sub structure of the building.
- > The mounting brackets are also securely fixed into the structural base layer.
- > Wind pressure, Wind suction, static and moving load forces are transferred through the support material to the substrate and the fixing brackets.



Your contact to COMPACFOAM

COMPACFOAM Head Office and Production:
 Resselstraße 7 - 11
 2120 Wolkersdorf, Austria
 Phone +43 (0) 2245 / 20 8 02
 E-Mail: office@compacfoam.com

www.compacfoam.com

